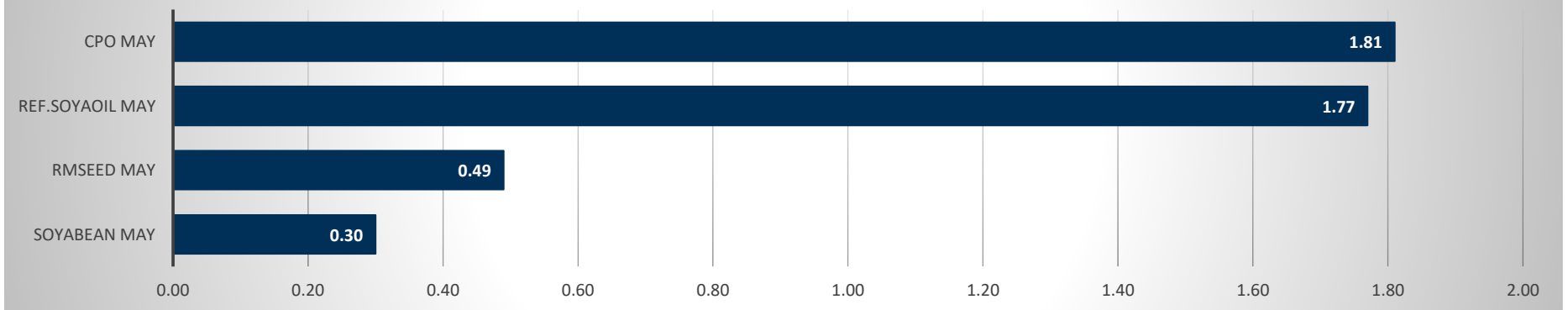


Commodity	Open	High	Low	Close	Rs.Chg	% Chg	Spot	Vol	OI	OI Chg	OI STATUS
Soyabean May	7256.00	7260.00	7102.00	7128.00	21.00	0.30	7403.00	15635	58205	-4.01	Short Covering
Rmseed May	6970.00	7030.00	6863.00	6905.00	34.00	0.49	7325.00	25320	54430	-10.68	Short Covering
Ref.Soyaoil May	1368.00	1398.00	1368.00	1384.80	24.10	1.77	1445.50	29245	30580	-5.52	Short Covering
Cpo May	1172.50	1189.20	1171.70	1176.60	20.90	1.81	1237.00	2625	5032	-2.69	Short Covering

Commodity	Daily Levels								Trend	Performance			
	Close	Res - 3	Res - 2	Res - 1	Pivot	Sup - 1	Sup - 2	Sup - 3		1 Week	1 Month	3 Month	1 Year
Soyabean May	7128.00	7382.0	7321.0	7224.0	7163.0	7066.0	7005.0	6908.0	Positive	-7.15	15.92	35.03	46.32
Rmseed May	6905.00	7170.0	7100.0	7003.0	6933.0	6836.0	6766.0	6669.0	Positive	-6.13	17.71	19.58	39.55
Ref.Soyaoil May	1384.80	1430.0	1414.0	1400.0	1384.0	1370.0	1354.0	1340.0	Positive	-3.57	8.33	20.45	42.48
Cpo May	1176.60	1204.2	1196.7	1186.7	1179.2	1169.2	1161.7	1151.7	Positive	-4.32	3.76	19.68	46.28

Price Movement



DAILY SOYABEAN SYPNOSIS

Expiry	Open	High	Low	Close	Rs.Chg	% Chg	Spot	Vol	OI	OI Chg	Fut-Spot	OI STATUS
20 MAY 2021	7256.00	7260.00	7102.00	7128.00	21.00	0.30	7403.00	15635	58205	-4.01	-275.00	Short Covering
18 JUN 2021	6934.00	6939.00	6735.00	6889.00	169.00	2.51	7403.00	11075	39355	0.87	-514.00	Fresh Buying
20 JUL 2021	6681.00	6681.00	6487.00	6606.00	108.00	1.66	7403.00	1065	5050	10.14	-797.00	Fresh Buying

- Soyabean trading range for the day is 7005-7321.
- Soyabean prices gained tracking rise in overseas prices as global supply tightens, and demand persists.
- USDA said soybean export sales totaled 731,500 tonnes, topping forecasts that ranged from 100,000 tonnes to 700,000 tonnes.
- Russia plans to reduce export tax on soybeans from July 1
- At the Indore spot market in top producer MP, soybean gained 168 Rupees to 7403 Rupees per 100 kgs.

CHART



TECHNICALS

Simple Moving Average

5 Days	10 Days	20 Days	50 Days	100 Days	200 Days
7036	7215	6855	5893	5220	4626
BUY	SELL	BUY	BUY	BUY	BUY

Exponential Moving Average

5 Days	10 Days	20 Days	50 Days	100 Days	200 Days
7099	7062	6806	6116	5500	4928
BUY	BUY	BUY	BUY	BUY	BUY

Spread

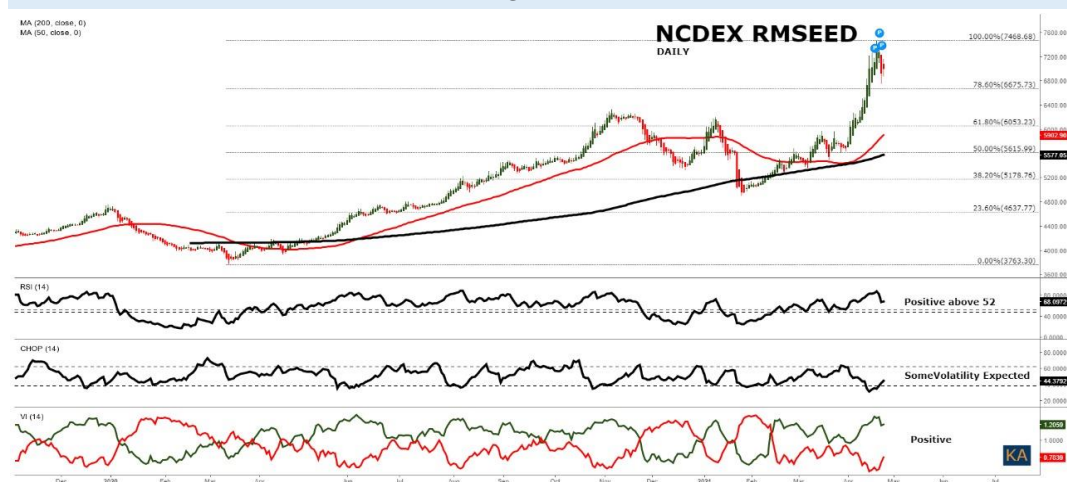
Month	Rate	MAY	JUN	JUL
MAY	7128		-239	-522
JUN	6889			-283
JUL	6606			

DAILY RMSEED SYNOPSIS

Expiry	Open	High	Low	Close	Rs.Chg	% Chg	Spot	Vol	OI	OI Chg	Fut-Spot	OI STATUS
14 MAY 2021	6970.00	7030.00	6863.00	6905.00	34.00	0.49	7325.00	25320	54430	-10.68	-420.00	Short Covering
18 JUN 2021	7000.00	7020.00	6865.00	6899.00	36.00	0.52	7325.00	21540	39850	21.20	-426.00	Fresh Buying
20 JUL 2021	6939.00	6954.00	6875.00	6927.00	38.00	0.55	7325.00	2700	4970	18.05	-398.00	Fresh Buying

- Rmseed trading range for the day is 6766-7100.
- Mustard seed prices gained as crushing as increased due to rise in mustard oil demand.
- A total of 1.2 million tonnes of mustard crushing occurred compared to 5.50 lakh tonnes.
- The stock of mustard with farmers is estimated to be 62.50 lakh tonnes and processors and stockists have a stock of six lakh tonnes of mustard.
- In Alwar spot market in Rajasthan the prices dropped -206 Rupees to end at 7325 Rupees per 100 kg.

CHART



TECHNICALS

Simple Moving Average

5 Days	10 Days	20 Days	50 Days	100 Days	200 Days
6942	7031	6606	5992	5852	5666
SELL	SELL	BUY	BUY	BUY	BUY

Exponential Moving Average

5 Days	10 Days	20 Days	50 Days	100 Days	200 Days
6954	6897	6659	6230	5966	5633
SELL	SELL	BUY	BUY	BUY	BUY

Spread

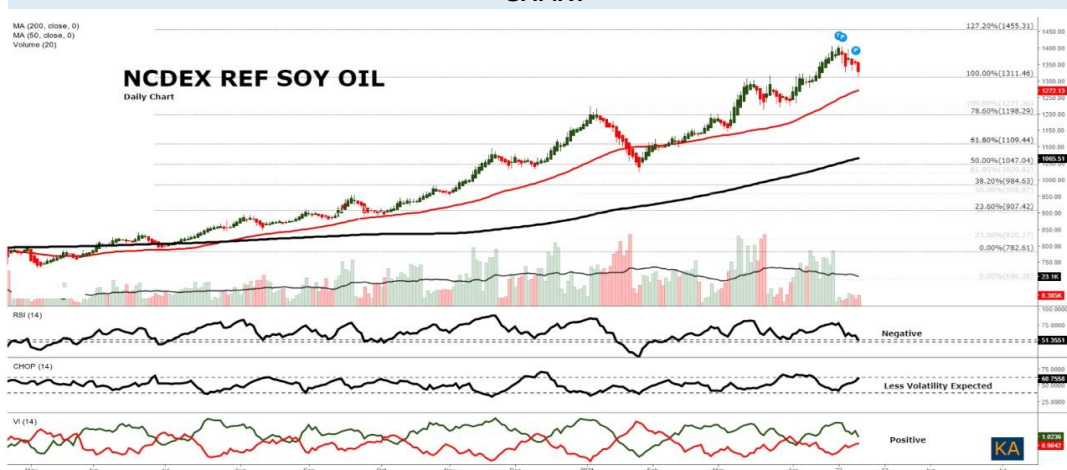
Month	Rate	MAY	JUN	JUL
MAY	6905		-6	22
JUN	6899			28
JUL	6927			

DAILY SOYOIL SYPNOSIS

Expiry	Open	High	Low	Close	Rs.Chg	% Chg	Spot	Vol	OI	OI Chg	Fut-Spot	OI STATUS
14 MAY 2021	1368.00	1398.00	1368.00	1384.80	24.10	1.77	1445.50	29245	30580	-5.52	-60.70	Short Covering
18 JUN 2021	1341.40	1355.30	1334.00	1346.80	26.70	2.02	1445.50	13470	9910	-9.87	-98.70	Short Covering
20 JUL 2021	1320.80	1325.30	1317.50	1320.40	30.50	2.36	1445.50	100	840	5.00	-125.10	Fresh Buying

- Ref.Soya oil trading range for the day is 1354-1414.
- Refsoyoil prices gained amid worries about global edible oils supply.
- However upside seen limited after reports that summer oilseed crop sowing progress is very good as on date.
- There is no impact of COVID-19 pandemic situation on progress of area coverage under summer crops in the country.
- At the Indore spot market in Madhya Pradesh, soyoil was steady at 1445.5 Rupees per 10 kgs.

CHART



TECHNICALS

Simple Moving Average

5 Days	10 Days	20 Days	50 Days	100 Days	200 Days
1386.5	1396.2	1363.1	1286.0	1204.9	1070.3
SELL	SELL	SELL	BUY	BUY	BUY

Exponential Moving Average

5 Days	10 Days	20 Days	50 Days	100 Days	200 Days
1383.9	1382.6	1361.0	1295.6	1215.9	1109.0
SELL	SELL	SELL	BUY	BUY	BUY

Spread

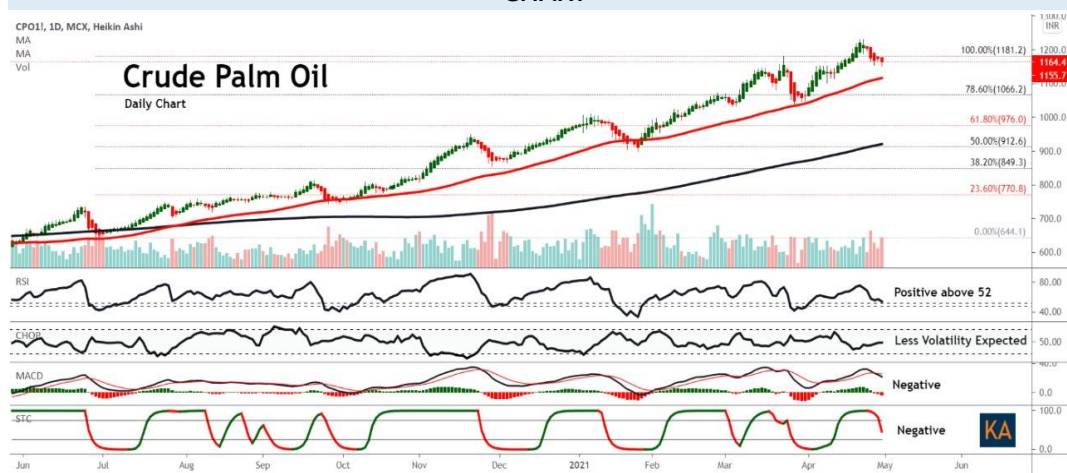
Month	Rate	MAY	JUN	JUL
MAY	1384.8		-38.0	-64.4
JUN	1346.8			-26.4
JUL	1320.4			

DAILY CRUDE PALM OIL SYPNOSIS

Expiry	Open	High	Low	Close	Rs.Chg	% Chg	Spot	Vol	OI	OI Chg	Fut-Spot	OI STATUS
14 MAY 2021	1172.50	1189.20	1171.70	1176.60	20.90	1.81	1237.00	2625	5032	-2.69	-60.40	Short Covering
30 JUN 2021	1121.50	1142.60	1121.50	1134.00	24.30	2.19	1237.00	971	1026	48.48	-103.00	Fresh Buying
30 JUL 2021	1091.00	1105.00	1091.00	1101.00	15.40	1.42	1237.00	7	3	0.00	-136.00	Short Covering

- CPO trading range for the day is 1161.7-1196.7.
- Crude palm oil gains tracking rise in Malaysian prices buoyed by stronger April exports and amid worries about global edible oils supply.
- Indonesia's March crude palm oil production was up 13.5% compared to the year ago, an official at the country's palm oil association GAPKI told.
- Crude palm oil output in March stood at 3.71 million tonnes compared with the 3.27 million tonnes produced in the same month last year.
- In spot market, Crude palm oil gained by 23 Rupees to end at 1237 Rupees.

CHART



TECHNICALS

Simple Moving Average

5 Days	10 Days	20 Days	50 Days	100 Days	200 Days
1205.2	1205.4	1174.4	1129.4	1047.3	925.6
SELL	SELL	SELL	BUY	BUY	BUY

Exponential Moving Average

5 Days	10 Days	20 Days	50 Days	100 Days	200 Days
1195.9	1195.1	1178.6	1128.6	1058.5	958.0
SELL	SELL	SELL	BUY	BUY	BUY

Spread

Month	Rate	MAY	JUN	JUL
MAY	1176.6		-42.6	-75.6
JUN	1134.0			-33.0
JUL	1101.0			

SOYABEAN PRICE MOVEMENT SINCE 2011

Year						Sowing	Growth	Harvesting					Crop Calendar
	JAN	FEB	MAR	APR	MAY	JUN	JUL	AUG	SEP	OCT	NOV	DEC	
2011	2474.50	2408.00	2338.50	2415.50	2372.00	2294.00	2445.50	2410.50	2090.00	2178.50	2243.50	2514.00	140.00
	4.23	-2.69	-2.89	3.29	-1.80	-3.29	6.60	-1.43	-13.30	4.23	2.98	12.06	5.90
2012	2451.50	2668.50	3085.50	3625.00	3404.00	3968.50	4370.50	3947.50	3201.50	3298.00	3209.50	3203.00	689.00
	-2.49	8.85	15.63	17.49	-6.10	16.58	10.13	-9.68	-18.90	3.01	-2.68	-0.20	27.41
2013	3287.50	3324.50	3641.00	3932.00	3810.00	3670.50	2973.00	3470.00	3531.00	3925.00	3860.00	3819.00	616.00
	2.64	1.13	9.52	7.99	-3.10	-3.66	-19.00	16.72	1.76	11.16	-1.66	-1.06	19.23
2014	3926.50	4165.00	4311.50	4777.50	4592.00	4094.00	3639.00	3358.00	2963.00	3289.00	3300.00	3366.00	-453.00
	2.81	6.07	3.52	10.81	-3.88	-10.84	-11.11	-7.72	-11.76	11.00	0.33	2.00	-11.86
2015	3434.00	3406.00	3458.00	4025.00	3890.00	3329.00	3160.00	3218.00	3429.00	3909.00	3907.00	3880.00	514.00
	2.02	-0.82	1.53	16.40	-3.35	-14.42	-5.08	1.84	6.56	14.00	-0.05	-0.69	15.27
2016	3726.00	3664.00	4010.00	3927.00	3835.00	3740.00	3557.00	3257.00	3235.00	3114.00	3116.00	3029.00	-851.00
	-3.97	-1.66	9.44	-2.07	-2.34	-2.48	-4.89	-8.43	-0.68	-3.74	0.06	-2.79	-21.93
2017	3092.00	3007.00	2941.00	3002.00	2762.00	2925.00	3154.00	3097.00	3033.00	2823.00	3098.00	3118.00	89.00
	2.08	-2.75	-2.19	2.07	-7.99	5.90	7.83	-1.81	-2.07	-6.92	9.74	0.65	2.94
2018	3685.00	3802.00	3756.00	3669.00	3549.00	3566.00	3392.00	3222.00	3233.00	3269.00	3354.00	3399.00	281.00
	18.18	3.18	-1.21	-2.32	-3.27	0.48	-4.88	-5.01	0.34	1.11	2.60	1.34	9.01
2019	3826.00	3637.00	3681.00	3676.00	3718.00	3671.00	3582.00	3825.00	3939.00	3863.00	4072.00	4436.00	1037.00
	12.56	-4.94	1.21	-0.14	1.14	-1.26	-2.42	6.78	2.98	-1.93	5.41	8.94	30.51
2020	4084.00	3708.00	3796.00	3810.00	3830.00	3714.00	3780.00	4116.00	3866.00	4263.00	4415.00	4606.00	170.00
	-7.94	-9.21	2.37	0.37	0.52	-3.03	1.78	8.89	-6.07	10.27	3.57	4.33	3.83
2021	4644.00	5078.00	5993.00										1387.00
	0.83	9.35	18.02										30.11
Average	1.48	0.61	4.39	4.91	-2.89	-1.85	-1.23	-0.14	-3.80	4.69	1.94	2.82	Average

RMSEED PRICE MOVEMENT SINCE 2011

Year	Growth		Harvesting			Sowing							Crop Calendar
	JAN	FEB	MAR	APR	MAY	JUN	JUL	AUG	SEP	OCT	NOV	DEC	
2011	2993.00	2924.00	2739.00	2806.00	2944.00	2901.00	3017.00	2997.00	2858.00	3104.00	3194.00	3311.00	318.00
	0.70	-2.31	-6.33	2.45	4.92	-1.46	4.00	-0.66	-4.64	8.61	2.90	3.66	10.62
2012	3346.00	3632.00	3925.00	4130.00	3901.00	3990.00	4397.00	4452.00	3927.00	4269.00	4214.00	3544.00	233.00
	1.06	8.55	8.07	5.22	-5.54	2.28	10.20	1.25	-11.79	8.71	-1.29	-15.90	7.04
2013	3492.00	3428.00	3479.00	3505.00	3514.00	3451.00	3182.00	3571.00	3641.00	3878.00	3811.00	3469.00	-75.00
	-1.47	-1.83	1.49	0.75	0.26	-1.79	-7.79	12.23	1.96	6.51	-1.73	-8.97	-2.12
2014	3353.00	3537.00	3504.00	3594.00	3456.00	3595.00	3641.00	3592.00	3693.00	3763.00	3885.00	3524.00	55.00
	-3.34	5.49	-0.93	2.57	-3.84	4.02	1.28	-1.35	2.81	1.90	3.24	-9.29	1.59
2015	3378.00	3406.00	3411.00	3869.00	4306.00	4255.00	4232.00	4317.00	4514.00	4923.00	4897.00	4244.00	720.00
	-4.14	0.83	0.15	13.43	11.29	-1.18	-0.54	2.01	4.56	9.06	-0.53	-13.33	20.43
2016	3877.00	3929.00	4202.00	4472.00	4503.00	4848.00	4875.00	4681.00	4642.00	4498.00	4876.00	3974.00	604.00
	-8.65	1.34	6.95	6.43	0.69	7.66	0.56	-3.98	-0.83	-3.10	8.40	-18.50	14.23
2017	3834.00	3848.00	3908.00	3759.00	3483.00	3609.00	3699.00	3771.00	3739.00	3897.00	4104.00	3939.00	-35.00
	-3.52	0.37	1.56	-3.81	-7.34	3.62	2.49	1.95	-0.85	4.23	5.31	-4.02	-0.88
2018	4187.00	4125.00	4054.00	3795.00	3958.00	4027.00	4214.00	4070.00	4241.00	4170.00	3977.00	3929.00	-10.00
	6.30	-1.48	-1.72	-6.39	4.30	1.74	4.64	-3.42	4.20	-1.67	-4.63	-1.21	-0.25
2019	3983.00	3840.00	3750.00	3744.00	3718.00	3939.00	3950.00	3922.00	3954.00	4306.00	4321.00	4658.00	729.00
	1.37	-3.59	-2.34	-0.16	-0.69	5.94	0.28	-0.71	0.82	8.90	0.35	7.80	18.55
2020	4109.00	4000.00	4118.00	4141.00	4490.00	4650.00	5014.00	5410.00	5468.00	6067.00	5871.00	5817.00	1159.00
	-11.79	-2.65	2.95	0.56	8.43	3.56	7.83	7.90	1.07	10.95	-3.23	-0.92	24.88
2021	5604.00	5536.00	5682.00										-135.00
	-3.66	-1.21	2.64										-2.32
Average	-2.47	0.32	1.13	2.10	1.25	2.44	2.29	1.52	-0.27	5.41	0.88	-6.07	Average

SOYOIL PRICE MOVEMENT SINCE 2011

	JAN	FEB	MAR	APR	MAY	JUN	JUL	AUG	SEP	OCT	NOV	DEC	Growth
2011	658.60	628.40	599.65	626.50	660.95	634.50	661.85	660.75	614.10	618.20	634.65	733.50	100.95
	4.12	-4.59	-4.58	4.48	5.50	-4.00	4.31	-0.17	-7.06	0.67	2.66	15.58	15.33
2012	683.15	712.75	751.40	775.70	735.65	761.50	784.85	792.20	663.20	686.70	720.25	695.80	-37.70
	-6.86	4.33	5.42	3.23	-5.16	3.51	3.07	0.94	-16.28	3.54	4.89	-3.39	-5.52
2013	737.35	680.85	688.10	719.30	715.05	673.00	651.95	703.20	686.20	748.85	713.80	698.10	2.30
	5.97	-7.66	1.06	4.53	-0.59	-5.88	-3.13	7.86	-2.42	9.13	-4.68	-2.20	0.31
2014	683.55	716.65	705.45	718.50	676.60	693.45	676.60	610.65	614.00	599.85	576.80	638.05	-60.05
	-2.08	4.84	-1.56	1.85	-5.83	2.49	-2.43	-9.75	0.55	-2.30	-3.84	10.62	-8.79
2015	620.10	595.40	583.60	582.50	613.00	588.15	574.70	574.15	598.05	611.30	619.65	614.50	-23.55
	-2.81	-3.98	-1.98	-0.19	5.24	-4.05	-2.29	-0.10	4.16	2.22	1.37	-0.83	-3.80
2016	610.10	617.40	642.50	657.60	656.95	644.10	631.30	645.95	661.45	674.30	727.65	706.95	92.45
	-0.72	1.20	4.07	2.35	-0.10	-1.96	-1.99	2.32	2.40	1.94	7.91	-2.84	15.15
2017	686.10	664.35	623.10	610.85	622.80	641.90	657.35	664.05	664.70	686.10	746.45	727.50	20.55
	-2.95	-3.17	-6.21	-1.97	1.96	3.07	2.41	1.02	0.10	3.22	8.80	-2.54	3.00
2018	743.85	760.85	786.85	764.75	776.40	756.20	742.30	739.75	748.30	754.85	719.95	730.10	2.60
	2.25	2.29	3.42	-2.81	1.52	-2.60	-1.84	-0.34	1.16	0.88	-4.62	1.41	0.35
2019	775.80	756.85	728.75	740.05	755.30	745.10	733.90	755.05	764.50	773.65	814.40	933.20	203.10
	6.26	-2.44	-3.71	1.55	2.06	-1.35	-1.50	2.88	1.25	1.20	5.27	14.59	26.18
2020	851.20	767.60	828.00	787.20	785.20	799.10	864.70	892.90	904.10	963.40	1072.30	1190.10	256.90
	-8.79	-9.82	7.87	-4.93	-0.25	1.77	8.21	3.26	1.25	6.56	11.30	10.99	30.18
2021	1105.50	1192.40	1269.50										79.40
	-7.11	7.86	6.47										7.18
Average	-1.16	-1.01	0.93	0.81	0.43	-0.90	0.48	0.79	-1.49	2.70	2.90	4.14	Average

CPO PRICE MOVEMENT SINCE 2011

	JAN	FEB	MAR	APR	MAY	JUN	JUL	AUG	SEP	OCT	NOV	DEC	Growth
2011	559.50	539.80	510.70	521.20	535.80	478.40	487.40	490.20	480.80	475.70	508.90	545.40	0.60
	2.70	-3.52	-5.39	2.06	2.80	-10.71	1.88	0.57	-1.92	-1.06	6.98	7.17	0.11
2012	514.20	536.20	592.30	621.50	585.90	566.40	564.40	551.60	446.20	425.20	423.20	417.90	-127.50
	-5.72	4.28	10.46	4.93	-5.73	-3.33	-0.35	-2.27	-19.11	-4.71	-0.47	-1.25	-23.38
2013	438.20	450.80	454.90	464.90	480.50	502.20	496.60	568.70	532.40	557.20	558.30	540.20	122.30
	4.86	2.88	0.91	2.20	3.36	4.52	-1.12	14.52	-6.38	4.66	0.20	-3.24	29.27
2014	524.00	590.00	569.70	567.70	524.90	535.00	539.10	439.60	474.50	457.20	439.50	460.60	-79.60
	-3.00	12.60	-3.44	-0.35	-7.54	1.92	0.77	-18.46	7.94	-3.65	-3.87	4.80	-14.74
2015	425.00	466.10	434.40	435.40	456.80	451.40	417.60	360.50	425.70	400.80	382.40	411.00	-49.60
	-7.73	9.67	-6.80	0.23	4.92	-1.18	-7.49	-13.67	18.09	-5.85	-4.59	7.48	-10.77
2016	432.50	481.90	532.20	564.00	537.00	506.80	524.70	559.10	581.60	514.90	554.70	582.70	171.70
	5.23	11.42	10.44	5.98	-4.79	-5.62	3.53	6.56	4.02	-11.47	7.73	5.05	41.78
2017	587.50	544.90	538.80	516.80	512.70	490.80	488.70	518.20	547.80	545.30	589.60	554.60	-28.10
	0.82	-7.25	-1.12	-4.08	-0.79	-4.27	-0.43	6.04	5.71	-0.46	8.12	-5.94	-4.82
2018	560.60	587.50	651.80	642.60	653.10	643.40	616.80	599.50	594.00	593.50	500.70	511.60	-43.00
	1.08	4.80	10.94	-1.41	1.63	-1.49	-4.13	-2.80	-0.92	-0.08	-15.64	2.18	-7.75
2019	569.40	550.10	525.90	529.70	519.30	515.80	513.60	522.20	546.60	587.90	680.00	795.20	283.60
	11.30	-3.39	-4.40	0.72	-1.96	-0.67	-0.43	1.67	4.67	7.56	15.67	16.94	55.43
2020	771.80	648.60	663.50	609.00	658.20	646.20	731.80	764.90	754.90	817.50	883.70	977.80	182.60
	-2.94	-15.96	2.30	-8.21	8.08	-1.82	13.25	4.52	-1.31	8.29	8.10	10.65	22.96
2021	969.30	1059.10	1076.30										81.30
	-0.87	9.26	1.62										8.31
Average	0.52	2.25	1.41	0.21	0.00	-2.27	0.55	-0.33	1.08	-0.68	2.22	4.38	Average

KEDIA ADVISORY

KEDIA STOCKS & COMMODITIES RESEARCH PVT LTD.
Mumbai. INDIA.

For more details, please contact:
Mobile: +91 9323406035 / 9320096333 / 9619551022
Email: info@kediaadvisory.com
URL: www.kediaadvisory.com
SEBI REGISTRATION NUMBER - INH000006156

General Disclaimers: This Report is prepared and distributed by Kedia Stocks & Commodities Research Pvt Ltd. for information purposes only. The recommendations, if any, made herein are expression of views and/or opinions and should not be deemed or construed to be neither advice for the purpose of purchase or sale through KSCRPL nor any solicitation or offering of any investment /trading opportunity. These information / opinions / views are not meant to serve as a professional investment guide for the readers. No action is solicited based upon the information provided herein. Recipients of this Report should rely on information/data arising out of their own investigations. Readers are advised to seek independent professional advice and arrive at an informed trading/investment decision before executing any trades or making any investments. This Report has been prepared on the basis of publicly available information, internally developed data and other sources believed by KSCRPL to be reliable. KSCRPL or its directors, employees, affiliates or representatives do not assume any responsibility for, or warrant the accuracy, completeness, adequacy and reliability of such information / opinions / views. While due care has been taken to ensure that the disclosures and opinions given are fair and reasonable, none of the directors, employees, affiliates or representatives of KSCRPL shall be liable for any direct, indirect, special, incidental, consequential, punitive or exemplary damages, including lost profits arising in any way whatsoever from the information / opinions / views contained in this Report. The possession, circulation and/or distribution of this Report may be restricted or regulated in certain jurisdictions by appropriate laws. No action has been or will be taken by KSCRPL in any jurisdiction (other than India), where any action for such purpose(s) is required. Accordingly, this Report shall not be possessed, circulated and/ or distributed in any such country or jurisdiction unless such action is in compliance with all applicable laws and regulations of such country or jurisdiction. KSCRPL requires such recipient to inform himself about and to observe any restrictions at his own expense, without any liability to KSCRPL. Any dispute arising out of this Report shall be subject to the exclusive jurisdiction of the Courts in India.